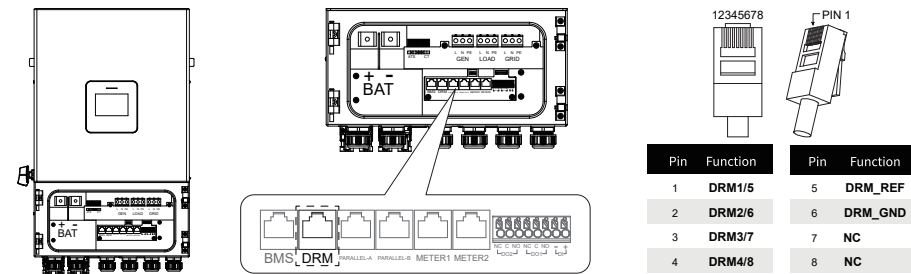


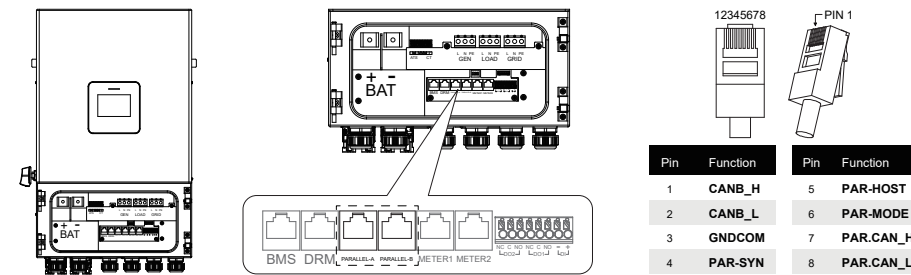
### 3.8 DRM Control (optional)

- When connecting the communication cable, please ensure that the wiring port definition is completely matched with the equipment, and the cable route shall avoid the interference source, power cable, etc. to avoid affecting the signal receiving.
- The communication cable between DRM and inverter can be connected with standard RJ45 crystal head, and the port definition is as follows:



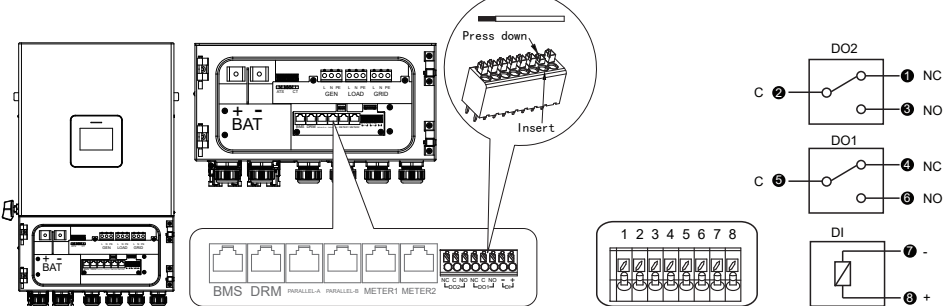
### 3.9 Parallel Communication (optional)

- When connecting the communication cable, please ensure that the wiring port definition is completely matched with the equipment, and the cable route shall avoid the interference source, power cable, etc. to avoid affecting the signal receiving.
- The communication cable between inverter and inverter can be connected with standard RJ45 crystal head, and the port definition is as follows:



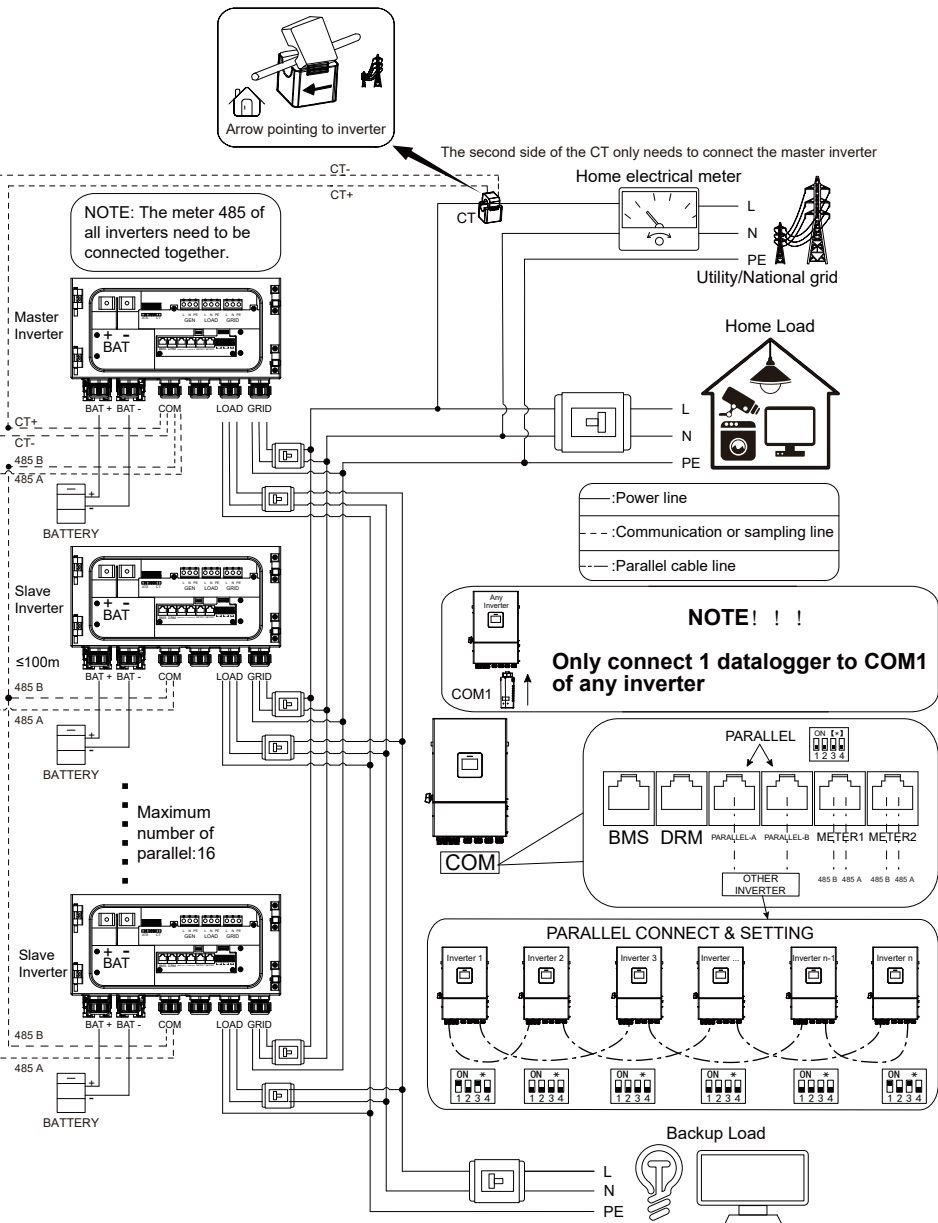
### 3.10 DRY Communication (optional)

- When connecting the communication cable, please ensure that the wiring port definition is completely matched with the equipment, and the cable route shall avoid the interference source, power cable, etc. to avoid affecting the signal receiving.
- The port definition is as follows:



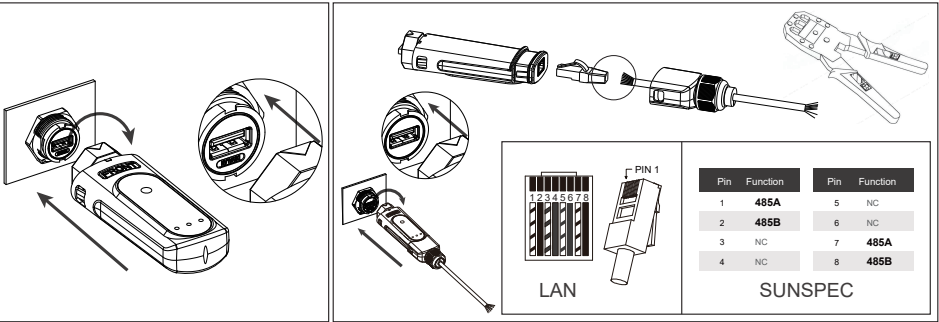
## 4. PARALLEL SYSTEM CONNECTION (OPTIONAL)

Note: This picture shows the CT connection, see the page 27 of the user manual for the CT meter connection and the DC meter connection.



## 5. INSTALLATION OF DATALOGGER (OPTIONAL)

- Open the COM port cover plate, assemble the datalogger and USB port together as shown in the figure, and tighten the datalogger.
- The datalogger can support Wifi, 4G, LAN or SUNSPEC communication. Refer to the datalogger installation guide for detailed operation.



## 6. INSPECTION BEFORE OPERATION

No.	Inspection items
1	The inverter shall be installed correctly, firmly and reliably
2	Cables shall be reasonably arranged and well protected, without damage
3	The datalogger shall be installed correctly, firmly and reliably
4	The safety signs and warning labels on the inverter are not blocked or damaged
5	"DC SWITCH" and all switches connected to the inverter are "OFF"
6	The AC output cable, DC input cable and grounding wire are connected correctly, firmly and reliably
7	Unused terminals and interfaces are protected with waterproof covers
8	Reasonable selection of AC circuit breaker
9	Reasonable installation space, clean and tidy environment, no construction remains

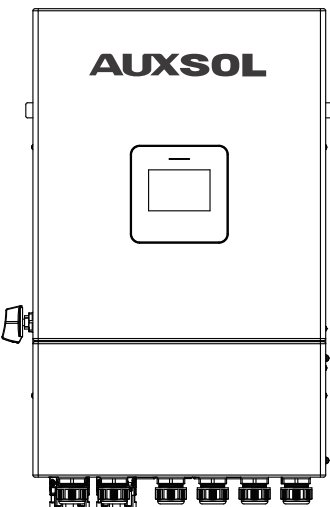
## 7. POWER ON THE SYSTEM

- At the AC switch between the inverter and the power grid, measure the voltage at the power grid side with a multimeter to confirm that the voltage of the power grid is within the allowable range of the inverter operating voltage.
- Turn off the AC switch.
- Battery system startup:  
a: Press the POWER button and the indicator lights up.  
b: Long press the ON/OFF button for more than 3s.
- Turn on the "DC SWITCH" on the inverter.
- Observe the inverter LCD/LED indicator and check the inverter operation status.

The registered account and password can be logged in at the same time on the APP and the website, or on multiple devices. This is a quick installation manual. If you do not know the specific operation, please contact our technical support.

**AUXSOL**  
WIN GREEN FUTURE TOGETHER

# QUICK INSTALLATION MANUAL



**ASG-(3.6~8)SL-ZL**

**AUXSOL**  
WIN GREEN FUTURE TOGETHER

Ningbo AUX Solar Technology Co., Ltd.

No.17 Fenglin Road, Cicheng Town,  
Jiangbei District, Ningbo City, Zhejiang Province, China

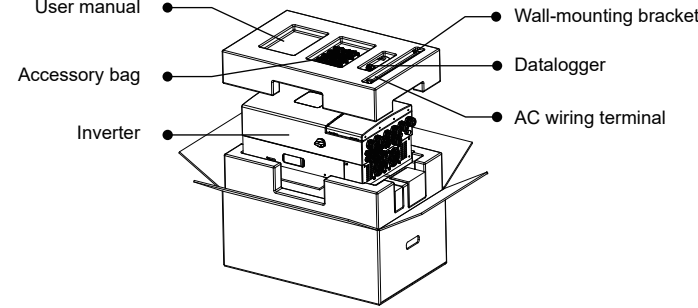
✉ info@auxsol.com

🌐 www.auxsol.com

☎ +86 0574-8765 2201

Before opening the inverter package, check the outer package for damage. Open the package and check the inverter for damage of exterior or missing accessories.

The attachments are placed as follows:



This picture is for reference only. Please refer to the actual situation.

No.	Description	Model	Unit	QTY	Remark
1	Inverter		pcs	1	
2	User manual		pcs	1	
3	Quick installation manual		pcs	1	
4	Self tapping screws+bolt expansion	ST8×40+M12×60	set	2	
5	Wall-mounting bracket		pcs	1	
6	Combination screws	M5×12	pcs	1	
7	Inspection report		pcs	1	
8	PV terminals (+, -)		pair	* <sup>1</sup>	black
9	Ground wire OT terminal		pcs	* <sup>2</sup>	
10	Datalogger		pcs	1	optional
11	Meter kit		set	1	optional
12	Parallel cable	CAT5e	pcs	1	optional
13	Current transformer		pcs	1	

\*<sup>1</sup> The number of PV terminals allocated corresponds to the number of specific inverter terminals.

\*<sup>2</sup> The number of Ground wire OT terminal dispatched is subject to the actual BOM.

## 1. INSTRUCTIONS FOR USER

- The contents of this document will be updated irregularly due to product version upgrading or other reasons. This document is only an installation guide and does not replace the user manual or the safety instructions on the product.
- All equipment operations must be performed by professional electrical technicians.
- Please read the user manual carefully for product information and safety precautions before installing the equipment. Equipment damage due to storage, handling, installation and use of equipment not in accordance with this document and the user manual is not covered by the equipment warranty.
- Insulating tools must be used when installing equipment. For personal safety, please wear personal protective equipment.

## 2. INSTALLATION OF INVERTER

If the installation space does not meet the requirements, the inverter may be derated.

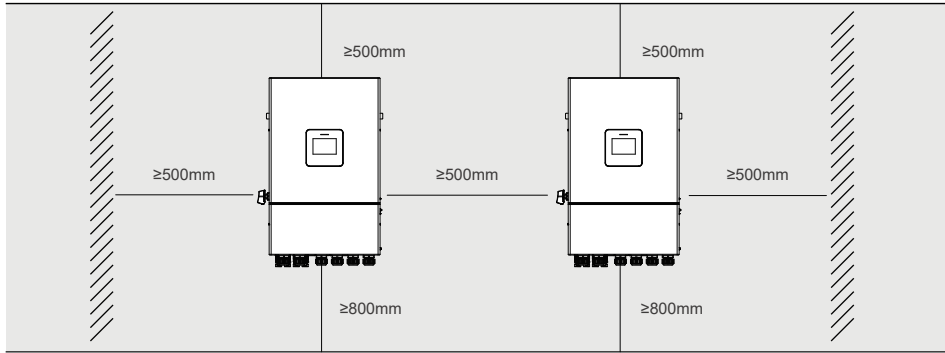


Fig. 2.0 Installation Clearance of Inverter

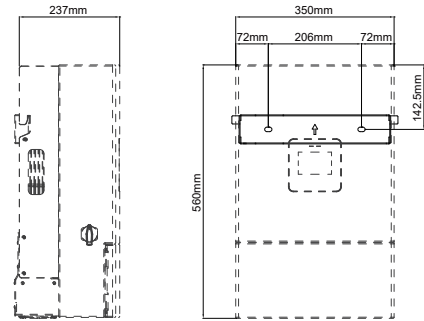


Fig. 2.1 Wall mounted fixed position inverter

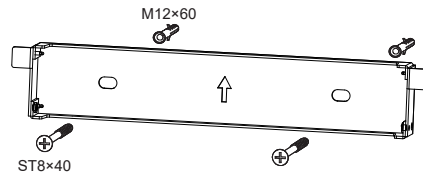


Fig. 2.2 Wall mounted inverter

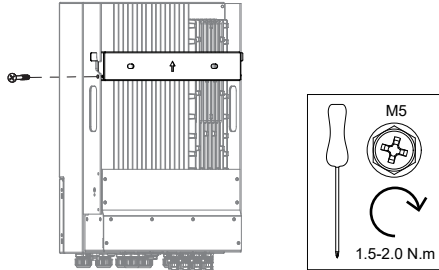


Fig. 2.3 Wall mounted bracket

- Select the mounting height of the support and mark the mounting holes according to Figure 2.2. For brick walls, the holes must be drilled to fit the expansion bolts.
- Confirm that the installation hole position is correctly marked, the support is horizontal, punch holes at the marked position, and drive the expansion pipe into the installation hole.
- Lift the inverter and align the rear bracket of the inverter with the convex of the mounting bracket. Hang the inverter on the mounting bracket and make sure it is secure (see Figure 2.3).
- Lock the inverter in the mounting bracket using the M5 screws of the accessory.

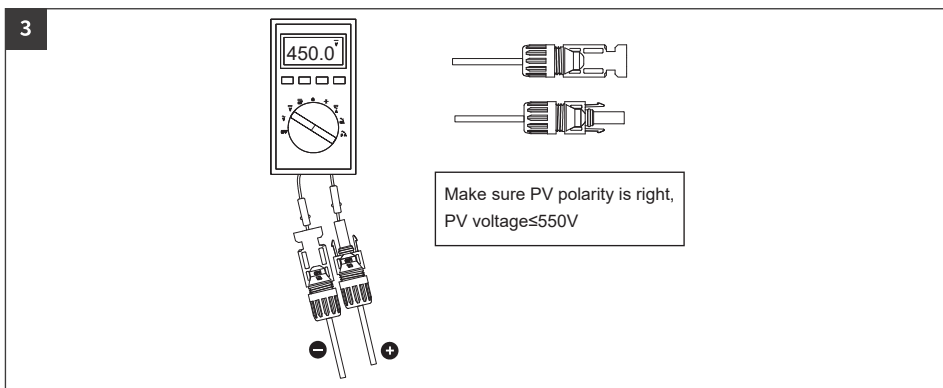
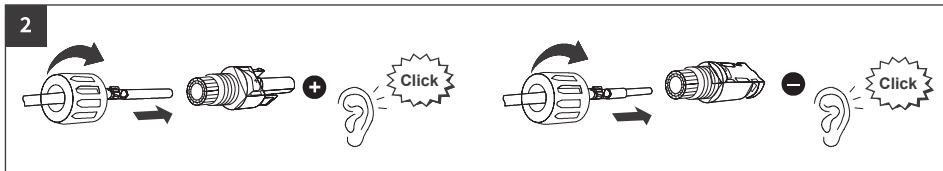
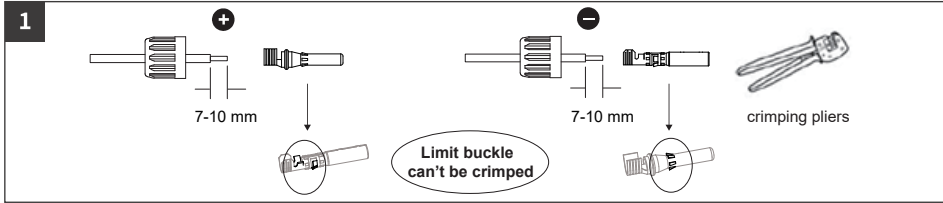
## 3. ELECTRICAL CONNECTION

### 3.1 Preparation before installation

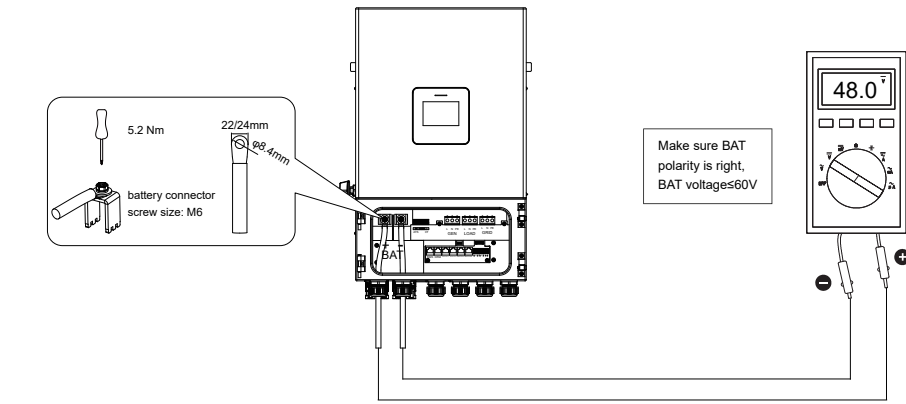
- Before making electrical connections, make sure that the inverter's "DC SWITCH" and all switches connected to the inverter are in the "OFF" position, otherwise the high voltage of the inverter may cause electrical shock.
- In order to ensure that the inverter and the grid can be safely disconnected in case of abnormal conditions, please connect the AC switch on the AC side of the inverter. Please select proper AC switch according to local industry standards and regulations.
- Electrical connections shall comply with the regulations of the country where the equipment is located.

Cable type	Wire cross section ( mm <sup>2</sup> )	
	Range	Recommended value
PV input cable	4.0 - 6.0 ( 12 - 10AWG )	4.0 ( 12AWG )
Battery cable	54.5 ( 0AWG or 2*3AWG )	54.5 ( 0AWG )
AC cable	6.0 - 10.0 ( 8 - 6AWG )	10.0 ( 6AWG )

### 3.2 PV input side connection

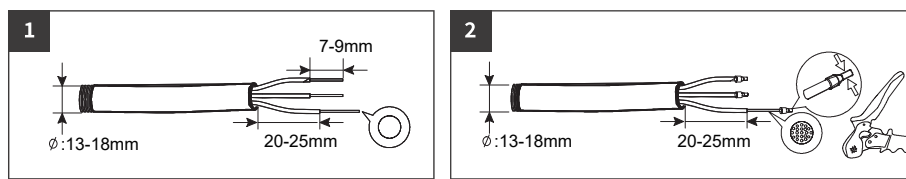


### 3.3 BAT input side connection

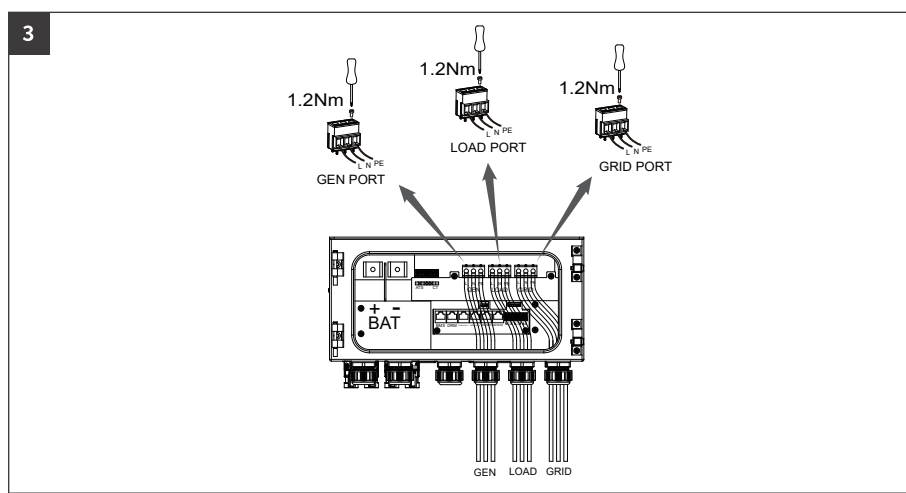


### 3.4 Connection of AC output side

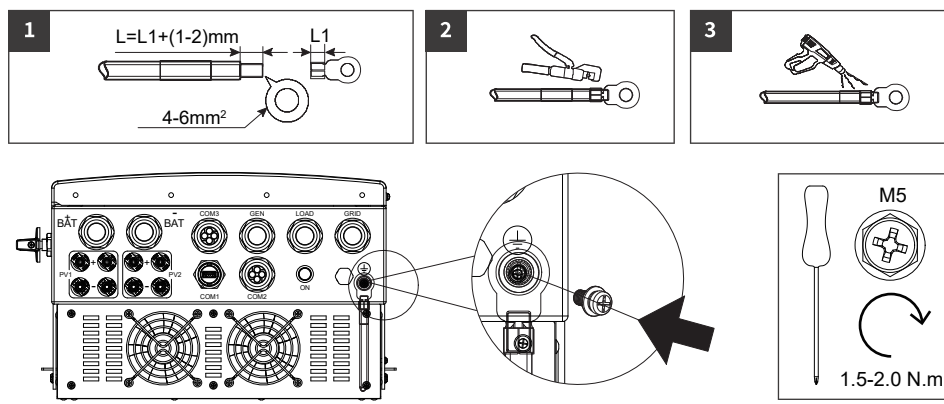
**Warning:** During wiring, AC cable completely matches with "L", "N" and  $\oplus$  port of AC terminal. If the cable is connected improperly, the equipment will be damaged.



Note:  
Single core wire, no terminal pressing operation required.  
For multi-core wires, cold-pressed terminal crimping pliers shall be used for crimping terminals.

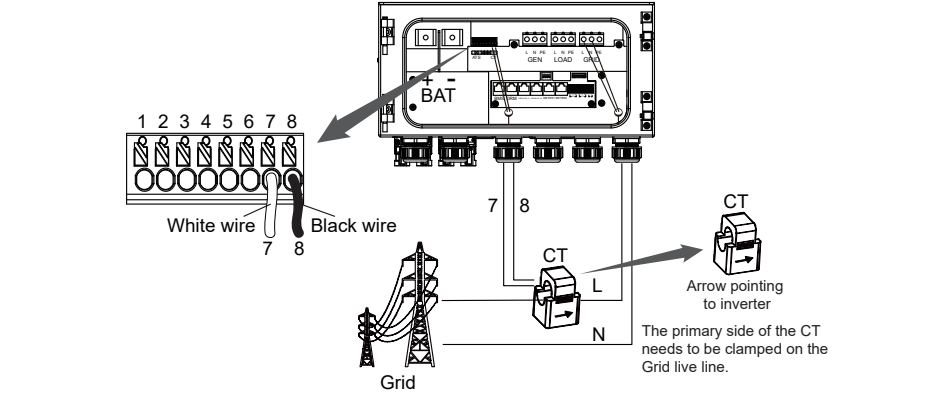


### 3.5 External earthing connection



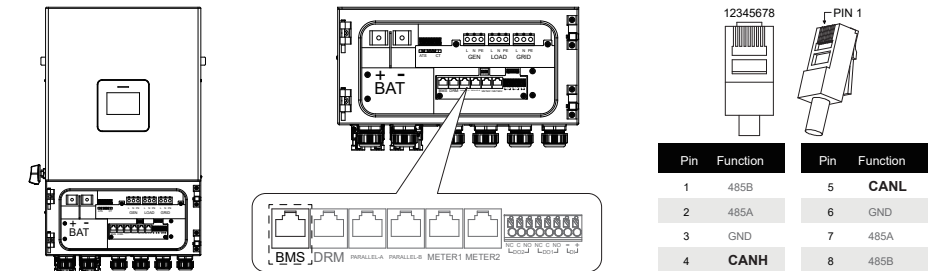
### 3.6 CT Connection

Note: when the reading of the load power on the LCD is not correct, please reverse the CT arrow.



### 3.7 BMS Communication

- When connecting the communication cable, please ensure that the wiring port definition is completely matched with the equipment, and the cable route shall avoid the interference source, power cable, etc. to avoid affecting the signal receiving.
- It is suggested that the communication cable between BMS and inverter should be ≤5m, and standard RJ45 crystal head can be connected. The port definition is as follows:



(此页不打印)

印刷说明:

- 1、材料：图纸展开尺寸：725x205mm，铜版纸，157g，成品展开尺寸公差±5mm；
- 2、印刷要求：双面黑白打印，内容颜色正确清晰无重影；
- 3、来料方式：折叠来料，折叠方式如下图所示（仅供参考，以实物为准）：  
（荷包折页法，从第五页开始依次按顺序内折，如图所示）

